



The Galactic Times

KIN 12: Yellow Crystal Human
(21st December 2025)

2026: The Odyssey of Consciousness Begins (or, The Search for Consciousness Starts)

At the new moon on KIN 129 (17th April), the Sun, Moon, Mercury, Mars, Saturn, Chiron and Neptune are all in the fire sign of Aries¹. This follows a Saturn-Neptune conjunction at 0° Aries on KIN 73 (20th February). It suggests that something is beginning.

The main energy signature of 2026 is a splitting which occurs during Pisces, 18th February to 20th March. The Amavasya moon on KIN 99 (18th March) is the tipping point for our new cycle.

Meanwhile, nine Galactic portals align. This allows a world activation to take place on KIN 158 (16th May). The activation, is appropriately termed, **“Turn this Spaceship back Home.”**

The magnetic grips preventing the people of Earth from experiencing infinite consciousness are being released. This activation will not take full effect until the Sun has had its full activation, which happens beyond 2026.

Our Background

Orbiting the star system Spica, is a planet, which carries the dragon codes for Earth. Still as stone. It's view towards our Solar System obscured by another Moon. A pulse is sent from deep down in the centre of that Planet.

These codes are to be activated in the Crystal Core of Planet Earth in 2026.

It is always the dragon that slays.

The Moon & The Water

The main activating force for 2026 is The Moon. The element of Water powers the change in consciousness.

Mercury goes retrograde in three water signs in 2026: Pisces, Cancer & Scorpio. The power of the Unconscious is bursting through. We need Heart. The most powerful transits are Scorpio & Pisces.

Throughout the year, tensions on the moon's north node axis provide sudden changes in direction for your life's mission, your work, intimate relationships or personal growth.

The combination of Water & Moon suggests a year of turbulent change. Definitely the end of a long cycle. The new watery energy matches perfectly with a cycle of life beginning on our planet. We are moving away from everything we know.

The north node is in Pisces for a total of 18 months; from 11th January 2025 to 26th July 2026, and is focusing us on spirituality, imagination, compassion, and trusting your intuition. Notably, it forces us to let go of control.

¹ @SteveJuddAstrology

Water supports us transition to a more open and understanding world culture. Opening to the unconscious drives a resurgence in telekinesis, the ability to move physical objects with the mind.

Moon & Water energy make it easier for you to enter the dreamscape, where peace, tranquility and divine knowledge are available. Accessing the dreamscape regularly allows us to escape the confined spaces of limited knowledge.

2026 is not simply about what happens — it's about how people feel while it happens, and what they do with those feelings. Emotion has often been bypassed, medicated or weaponised. The side effect is people implode when unable to deal with their feeling nature. Those who feel without collapsing gain clarity and authority.

Fire

Extremely influential in 2026 is fire's catalysing energy of change.

Fire transforms and it does so quickly. The human is not able to stop the spread of fire energy. The human is suited to surrender to the energy of fire. Fire consumes. It burns what is no longer needed.

The Devil, as the God of Destruction, uses fire to eliminate. Fighting the Devil's purpose leads to Rage in the human. One becomes devilish, as one wishes one's will to exceed that of Our Gods. Surrender is the only path to Peace.

Fire blisters. It burns institutions. It consumes the dead. Things no longer needed are burnt to ash. The purpose of fire in 2026 is to remove obstacles.

"The Leap Ahead"

The Galactic Year, which started on 9th December 2025, lasts 260 days, as presented in the new Mayan Dreamspell Synchronometer ².

During this cycle, the **Supramental Mind** can be brought into physical manifestation.

Sri Aurobindo & The Mother (Mirra Alfassa) anchored the Supramental Mind into the Earth in 1956, during a common meditation in the Sri Aurobindo Ashram Playground in Pondicherry, India.

This Galactic Year, known as, "**The Leap Ahead**", is when the Supramental Mind can be brought into a pair of spiritual collaborators.

Balancing Libra

The balancing force comes through Libra.

Long-term thinking is supported by the transits of Jupiter and Saturn.

Familial arrangements may alter for the positive. Self-care is on the rise. As people put their own needs first, mental health arrangements improve within the familial environment.

Internal effort will stimulate the grasping of realities more clearly. Intuition, guidance and gut feelings will be more trusted, throughout the entirety of 2026.

² See <https://lawoftime.org/wp-content/uploads/7-Seed-Year-Pocket-Calendar.pdf> for more info and <https://www.1320sync.com/> for a useful app.

Cycles of Time

According to the light libraries of Orion, one of the cycles beginning this **Leap Ahead** year resolves a separation that took place on Earth during the timeline of Eden. During Eden, humans lived with the experience of “**Timeless Action.**”

They were living in the now, fully balancing their human experience with the divine knowledge and understanding that comes from being everything and everywhere. The key to this 2026 reset; we are being connected by our hearts into the timeline of Heaven on Earth, which was when Eden existed.

We will activate this connection on KIN 158 (16th May). This is an energy of remembrance, which will connect us together.

Pluto in Aquarius

Pluto continues its 19-year transit of Aquarius, transforming our collective systems. The placements of other planets in 2026, will also make us re-consider our family or financial relationships.

Disruptive Uranus

Uranus, the planet of disruption and innovation, enters Gemini in April and remains there until 2032 / 2033. This placement insists we make changes in how we think, communicate, and connect during 2026 and beyond.

March to April

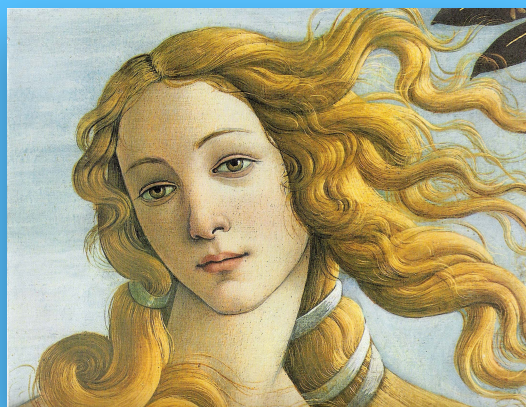
While Mercury moves backward through the Pisces water sign it emphasises introspection, remembrance, and fluidity in thought processes. Mercury in Pisces will also support intuition and inner work.

Pisces is associated with oceans, rivers, religions and secrets.

Aries is a sign of direct action and political institutions may receive a dose of Light from the Gods. Their intention is douse the people therein with **Purple** energy. Those receiving this gift, their hearts may find the clues they need to drop deeper into a new Reality.

Of this time the Gods say, “*There Will be a Switch of Programs. We are Heading to Unity.*”

*The face of Venus;
from Botticelli's Birth of Venus.*



April to May - It gets intense

Venus flies through Taurus from 19th April to 14th May and supports us in preparing to switch timelines.

As Venus rules Taurus, it represents human hearts opening to planet Earth. We drop down into our bodies. In order to navigate the change ahead, one is best guided by **Open Heartedness & Kindness**.

At the new moon on 16th May, “**The White Lady of Venus**,” heralds the dawn of a New Civilisation. The lunar nodes are under strain, making a karmic crossroads - a difficult but necessary ending to a long cycle.

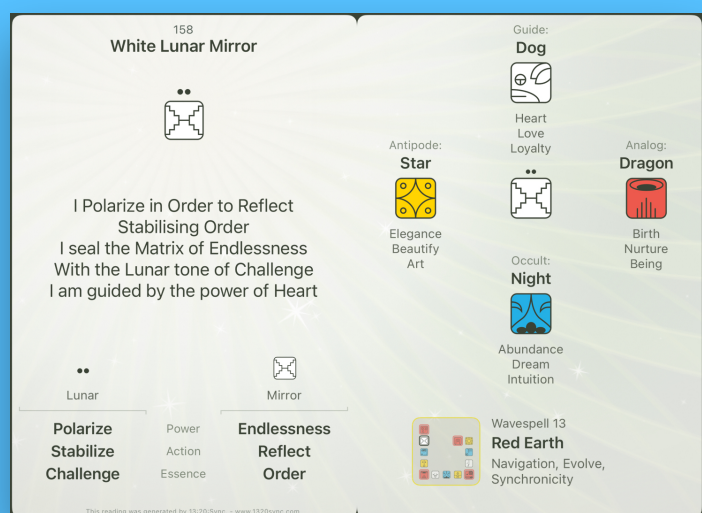
In the Mayan Dreamspell Synchronometer, 16th May corresponds with KIN 158, “White Lunar Mirror”. You can read more about this day’s energy in the image.

In keeping with the Split occurring through 2026, the energies of the day include the **Power of Endlessness**. During the year the possibility of “**Timeless Action**” re-opens for all humans.

The May inter-lunation³ also heralds disconnection. A Galactic mirror shatters. Our Earth matrix follows suit, breaking into tiny pieces.

We may find ourselves leaving intimate relationships, quitting jobs, or being broken into tiny pieces around mid-May. This is quite normal. At a global level, war may break out.

KIN 158: White Lunar Mirror: from the 13:20:Sync app.



As the KIN 158 (16th May) energy suggests, a great process is being initiated. One which is building as we move through the year. There is a separating of polarities happening, in order for us to understand better our differences.

In around four months time, during October, the shattering that takes place in May will somewhat re-solve itself.

July

An, the Sky God, and Ki, the Goddess of Earth, created the hybrid species of celestial-terrestrial beings that we call humans. The offspring of An and Ki were the Anki, “**Heaven & Earth Ones**”.

These first humans were aware beings; capable of communion with both realms. Their energy systems unified the Cosmic masculine and the Living Earth feminine.

Those were beautiful times. We thoroughly enjoyed them. Then, we were curious to experience life without divine connection. We wanted to know how it feels to be separate from God, from ourselves, from the Light within.

So, we cut the times apart.

³ Inter-lunation: period between the moon's disappearance and the appearance of the new moon.

The temple at Ġgantija, Gozo, was built to honour Ki.



We cast bits of our Souls away. Decided to forget where we came from. We disconnected a lot of energy flows towards Earth, and dismantled our chakra system for minimal support.

Here we are, having lived the pain, suffering and torture as victims and perpetrators. Now, we can call those times to an end. And return to our divinity.

On 11th July, KIN 210, “White Lunar Dog”, the tie to the existing chakra system is cut. At this time, it becomes possible to download an entirely new chakra system. This is the great cutting of ties to the past.

As the north node prepares to leave Pisces in July, it releases a torrent of Water.

The challenge of moving into this new timeline; one becomes a conduit of the Divine. You morph into a bridge between dimensions.

August

The Gods suggest this is the “*Toughest month*” of the year.

They say, “*It will not be Yeshua / Jesus who saves you. It will be you taming the raging bull. That is what will save you all.*”

By the time we reach August, Taurus and the World will have experienced a host of planetary shifts.

When Chiron retrogrades in Taurus from August to September it may feel like the scratching of a record, or the sound of metal screeching on glass. Something is coming to a halt.

An old system of hate and control is slowing. There may be riots. Some will experience physical pain. Many will experience emotional trauma.

Souls will be leaving Earth at this time.

The Gods tell us, “*Although there is pain the Heart must open. It is a time to take care of one and all.*”

Star Nation contact, September?

Shocking events seem to be the theme for September 2026.

On September 10th, KIN 15, is the new moon in Virgo, at 18 degrees. This is a critical degree and can signify “To kill or be killed.” This fits with other transits occurring:

- Uranus stationing retrograde in Gemini, implying disruption with communication, ideas, rebellion, systems, technology and social norms.
- Venus enters Scorpio, moving into a period of energetic tension with Black Moon Lilith in late Sagittarius. Lilith in the anaretic degree is raw, unfiltered independence and a refusal to be controlled.
- Mercury enters Libra.

Things may well be chaotic during this time with lots occurring around the world.

The **Christed Light** will be received during the time of the equinox.

The Energy Doctors channel, *"We will receive Star Nation contact in 2026"*. September is our best resonant guess, and would correlate with the reset moment 2026 represents.

October to November - Return to Stillness

From 24th October to 13th November, Mercury is retrograde in Scorpio.

Mercury's transit through this fiery water sign forces our attention onto our hidden or darker selves. It is likely to be a traumatic time on the world stage. Deep psychological distress may be ignited by public trauma on our screens.

During this time, The Gods will send **Pearl White Light** to all Earth Souls.

The planet Venus supports us to re-integrate the new timeline, when it retrogrades during Scorpio and Libra.

- During Scorpio (3rd to 25th October) the Soul's focus will be on deeper meaning, more intense aspects of relationships, and shared finances. Globally, light will be shone on issues related to power dynamics.
- As Venus moves backwards through its home sign of Libra (25th October to 14th November) the focus shifts to fairness, diplomacy, and balance in partnerships.

The Christed Light Stands Out

In the Mayan Dreamspell Synchronometer, 22nd December 2026 is KIN 118, "White Magnetic Mirror." This is the beginning of a 13-day Wavespell.

This Wavespell re-introduces us to the power of **Christ Consciousness** in our lives. It demands that we own the light of our Divinity.

Those who meet this challenge become anchors for the Christed consciousness in their communities. They begin to form bridges for others, between their day-to-day realities and higher consciousness.

This process is a community one. It takes time and the presence of the Christ grows in spirals. Consciousness manifests itself first in spiritually sensitive individuals, small groups and then radiates outward.

KIN 118: White Magnetic Mirror

